



GAT MONTHLY MEMBERSHIP PROGRESS REPORT

Results as of: 6/30/2023

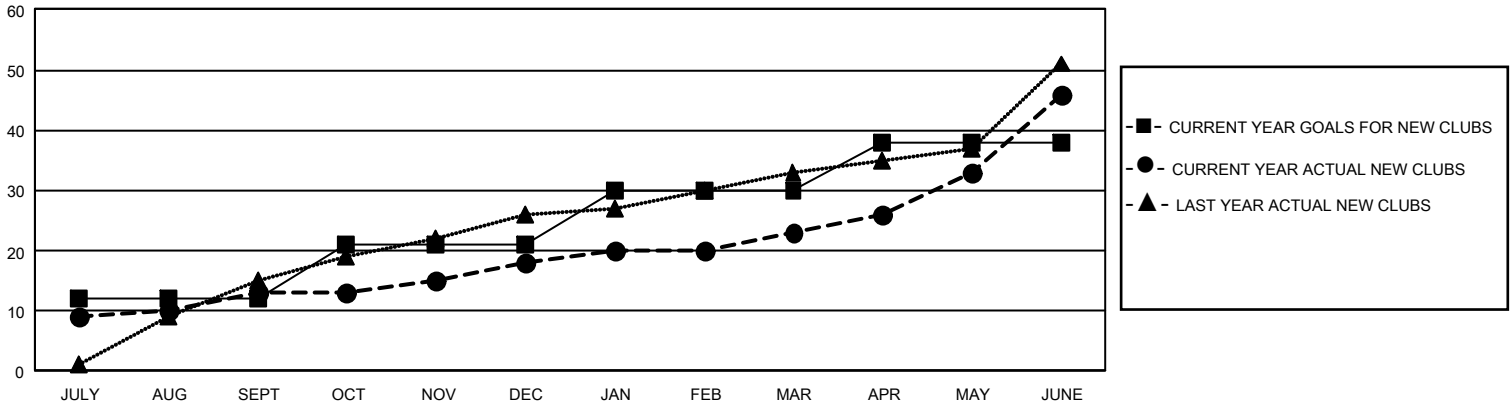
GMT Constitutional Area 8, Group B

REPORT DOES NOT INCLUDE CLUBS IN UNDISTRICTED AREAS.

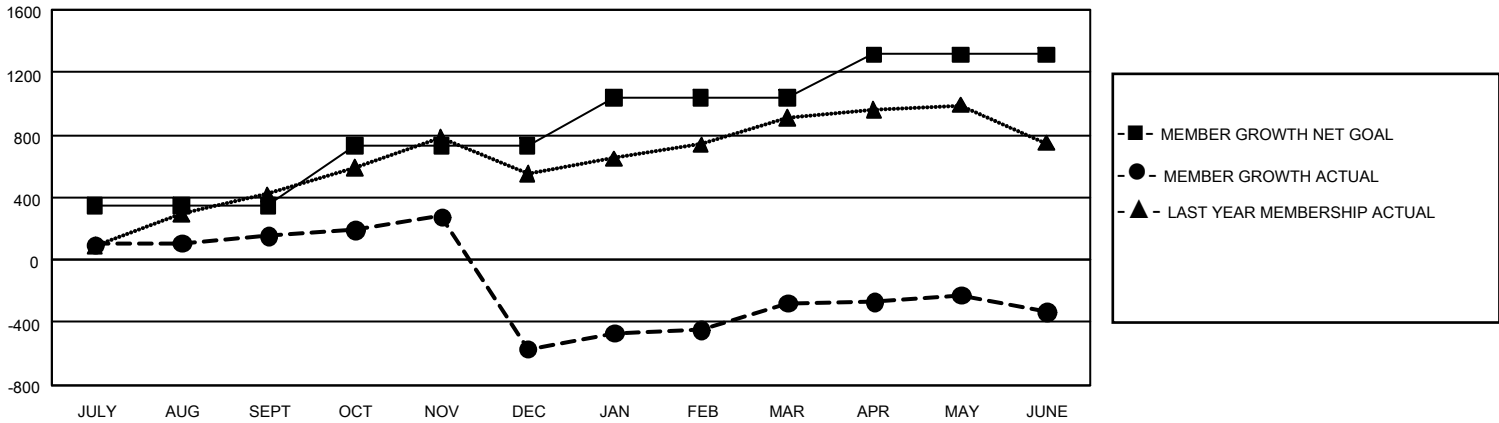
Clubs			
RESULTS FOR 2022-2023			
QUARTER	NEW CLUB GOAL	NEW CLUBS	DROPPED CLUBS
JULY/AUG/SEPT	36	13	8
OCT/NOV/DEC	27	5	30
JAN/FEB/MAR	27	5	3
APR/MAY/JUNE	24	23	9

Members			
RESULTS FOR 2022-2023			
QUARTER	MEMBER GROWTH NET GOAL	MEMBER GROWTH ACTUAL	DROPPED MEMBERS ACTUAL (including transfers)
JULY/AUG/SEPT	350	546	355
OCT/NOV/DEC	380	689	1,353
JAN/FEB/MAR	305	612	226
APR/MAY/JUNE	278	1,095	1,027

GOALS AND ACTUAL NEW CLUBS CUMULATIVE



GOALS AND ACTUAL MEMBERS CUMULATIVE



DROPPED CLUBS: 49	353 CLUBS OF 483 ADDED 1 OR MORE NEW MEMBERS	<u>GENDER DISTRIBUTION</u>	
		MALE 6,314 (58.32%)	FEMALE 4,507 (41.63%)
<u>DROPPED MEMBERS</u>		NON BINARY 0 (0.00%)	PREFER NOT TO ANSWER 6 (0.06%)
DECEASED 44	CLICK HERE FOR CUMULATIVE MEMBERSHIP DATA	TOTAL FAMILY UNIT MEMBERS 894	
CLUB CANCELLED 760		FAMILY MEMBERS PAYING HALF DUES 510	
OTHER 2,161			
TOTAL 2,965			